

Oxley 210

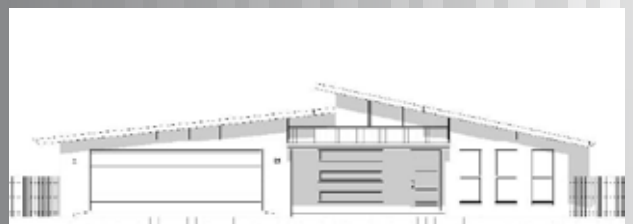


4 Bedrooms
1 Bathroom, 1 Ensuite
Large Open Living
Double Garage
Large Alfresco

Available in

- 210m² (Shown)
- 230m²
- 250m²

Facades



Oxley 210

Living - 176m²
Patio - 31m²
Porch - 3m²
TOTAL - 210m²

